



# SAILING INSTRUCTIONS

F18 World Championship 2017

Vallensbaek Sailing Club

10-15<sup>th</sup> July 2017



SPORT EVENT  
DENMARK



**TUBORGFONDET**

**TrygFonden**





# SAILING INSTRUCTIONS

## F18 World Championship 2017

### Vallensbaek Sailing Club, 10-15<sup>th</sup> July 2017

#### IN ALL PARTS THE FOLLOWING ABBREVIATIONS APPLY

|      |  |
|------|--|
| [NP] | Rules that are not grounds for protest by a boat.                        |
| [SP] | Rules for which a standard penalty may be applied by the Race Committee. |

#### 1. RULES

|     |   |
|-----|---|
| 1.1 | The regatta will be governed by the rules as defined in The Racing Rules of Sailing (RRS).    |
| 1.2 | Decisions of the International Jury will be final as provided in RRS 70.5.                    |
| 1.3 | National prescriptions do not apply.  |
| 1.4 | RRS 44.1 and RRS P2.1 are changed so that the One-Turn Penalty replaces the Two-Turn Penalty. |
| 1.5 | If there is a conflict between languages, the English text will take precedence.              |

#### 2. [DP] [NP] [SP] SAFETY REGULATIONS

(As the rest of the SI, these rules also apply at the practice race)

|     |  |
|-----|--|
| 2.1 | Check out / check in: Competitors will be required to sign a pre-established list, both before going out on the water (check out) and after coming back ashore (check in). The list will be placed on a board in the dingy park on the beach. Check-out will be open from at least one hour before the first scheduled warning signal of the day or from AP is removed if displayed ashore. Check-in will be open the same day until the protest time limit is closed. |
| 2.2 | Competitors shall wear personal flotation devices at all times while afloat, except briefly while changing or adjusting clothing or personal equipment.  |
| 2.3 | A boat that retires from racing and/or leaves the race area, shall notify the Race Committee before leaving the racing area, or if that is not possible, shall notify the Race Office as soon as possible after returning ashore. This rule does not apply, if the race committee signals AP over H or A, N over H or A, or if there are no more races on that day.  |
| 2.4 | When the Race Committee shows a white flag with a red cross, all support boats shall monitor VHF radio channel 72 for search and rescue or other safety-related instructions.  |

#### 3. [DP] CODE OF CONDUCT

|     |  |
|-----|--|
| 3.1 | Competitors shall handle any equipment provided by the Organizing Authority with proper care and seamanship. |
|-----|--|

#### 4. COMMUNICATIONS WITH COMPETITORS

|     |  |
|-----|--|
| 4.1 | Notices to competitors will be posted on the Official Notice Board(s) located at the Race Office.  |
| 4.2 | Signals ashore will be displayed at the big mast placed at the entry of the harbour.   |
| 4.3 | When flag AP is displayed ashore, '1 minute' is replaced with 'not less than 60 minutes' in the race signal AP. This changes race signal AP. |

#### 5. CHANGES TO SAILING INSTRUCTIONS

|     |  |
|-----|--|
| 5.1 | Any change to the format or schedule of races will be posted before 2100 hrs. on the day before it will take effect. |
| 5.2 | Any other changes to the Sailing Instructions will be posted before 0900 hrs. on the day it will take effect.        |



## 6. FORMAT OF RACING

|       |  |
|-------|--|
| 6.1   | The event is split into fleets and will consist of a qualifying series and a final series.   |
| 6.2   | Qualifying Series:   |
| 6.2.1 | Boats will be assigned to Green and Red fleets of, as nearly as possible, equal size and ability. Initial assignments will be made by a seeding committee appointed by the Race Committee. Those assignments will be posted not later than 0900 hrs. on the day of the first scheduled race.   |
| 6.2.2 | Boats will be reassigned to fleets after each day of racing, except if on the first day fewer than two races are completed by all fleets. If all fleets have completed the same number of races, boats will be reassigned on the basis of their ranks in the series. If the fleets have not completed the same number of races, the series scores for reassignment will be calculated for those races that both fleets have completed.<br>The fleet assignments will be made as follows:<br>Rank in series Fleet assignment:<br>First Red, Second Green, Third Green, Fourth Red,<br>Fifth Red, Sixth Green, and so on ... |
| 6.2.3 | Assignments may be based on the ranking available at 2359 hrs. that day, regardless of protests or requests for redress not yet decided.   |
| 6.3   | Final Series:  |
| 6.3.1 | A final series will be scheduled to start the day after the 6 <sup>th</sup> qualifying series race has been completed.   |
| 6.3.2 | Boats will be assigned to the Gold or Silver fleets on the basis of their ranks in the qualifying series. There will be the same number of fleets in the Final Series as there were in the Qualifying Series. Boats with the best qualifying-series ranks will race all final-series races in the Gold fleet and so on.  |
| 6.3.3 | Any recalculation of Qualifying Series ranking after boats have been assigned to Final Series will not affect the assignments except that a redress decision may promote a boat to a higher fleet.   |

## 7. SCHEDULE OF RACES

|     |   |           |                                  |
|-----|---|-----------|----------------------------------|
| 7.1 | Date  | Time      | Program                          |
|     | Monday 10 <sup>th</sup> July  | 1500 hrs. | Warning signal for practice race |
|     | Tuesday 11 <sup>th</sup> July   | 1100 hrs. | 1.st Warning signal of the day   |
|     | Wednesday 12 <sup>th</sup> July   | 1100 hrs. | 1.st Warning signal of the day   |
|     | Thursday 13 <sup>th</sup> July  | 1100 hrs. | 1.st Warning signal of the day   |
|     | Friday 14 <sup>th</sup> July  | 1100 hrs. | 1.st Warning signal of the day   |
|     | Saturday 15 <sup>th</sup> July  | 1100 hrs. | 1.st Warning signal of the day   |
| 7.2 | Fifteen (15) races are scheduled for the Worlds.  |           |                                  |
| 7.3 | Three (3) races per day are scheduled.  |           |                                  |
| 7.4 | Races not sailed on the scheduled day, may be sailed on a following day, at the discretion of the Race Committee.   |           |                                  |
| 7.5 | The maximum number of races per day is four (4).  |           |                                  |
| 7.6 | The warning signal for each succeeding race will be made as soon as practicable.  |           |                                  |
| 7.7 | To alert boats that a race or sequence of races will begin soon, the orange starting line flag will be displayed with one sound at least five minutes before a warning signal is displayed. |           |                                  |
| 7.8 | On the last scheduled day of racing, no warning signal will be made after 1500 hrs. except as a consequence of a General Recall.  |           |                                  |

## 8. COURSE AREAS

|     |  |
|-----|--|
| 8.1 | The course areas are shown in SI Addendum A. |
|-----|--|

## 9. THE COURSES

|     |  |
|-----|--|
| 9.1 | The diagrams in SI Addendum B show the courses, the course designations, the order in which marks are to be passed, and the side on which each mark is to be left.                             |
| 9.2 | A board on the race committee boat will show the approximate compass bearing to mark 1. Failing to do this, will not be ground for redress. This changes RRS 62.1(a).                          |
| 9.3 | Latest at the warning signal, the race committee will show a coloured flag or board telling which fleet will be starting. Green flag means green or silver fleet, red means red or gold fleet. |



| <b>10. MARKS</b> |  |
|------------------|--|
| 10.1             | Mark 1 and gate marks (4s/4p) and (5s/5p) will be orange inflatable buoys. Mark 3 will be a yellow inflatable buoy. Mark 2 will be a spar buoy with an orange flag. See Addendum B |
| 10.2             | The starting and finishing line marks will be Race Committee vessels or spar buoys with orange or blue flags.  |

| <b>11. CLASS FLAG</b> |  |
|-----------------------|--|
| 11.1                  | The Class flag will be the International Formula 18 class flag. Red flag with black lettering F18. |

| <b>12. THE START</b> |  |
|----------------------|--|
| 12.1                 | The starting line will be between a staff displaying an orange flag on the race committee vessel at the starboard end and either<br>(a) a spar buoy with an orange flag at the port end, or<br>(b) a staff displaying an orange flag on the Race Committee vessel at the port end. |
| 12.2 [DP]            | Boats whose warning signal has not been made shall avoid the starting area. The starting area is defined as a rectangle 50 meters from the starting line, and marks in all directions.   |
| 12.3                 | A boat starting later than 4 minutes after her starting signal will be scored: Did Not Start (DNS). This changes rule A4 and A5.   |

| <b>13. COURSE CHANGES</b> |   |
|---------------------------|---|
| 13.1                      | To change the next leg of the course, the Race Committee will move the original mark to a new position. |
| 13.2                      | If a gate is replaced by one mark only, this mark is to be left port.                                   |

| <b>14. THE FINISH</b> |   |
|-----------------------|---|
| 14.1                  | The finishing line will be between a staff displaying a blue flag on the Race Committee vessel and either:<br>(a) the course side of the nearby spar buoy with a blue flag, or<br>(b) a staff displaying a blue flag on the nearby Race Committee vessel. |

| <b>15. TIME LIMITS AND TARGET TIMES</b> |  |                  |        |                 |        |                   |        |               |        |
|---|--|------------------|--------|-----------------|--------|-------------------|--------|---------------|--------|
| 15.1                                    | Time limits in minutes and target times are as follows: <table border="1" style="width: 100%; border-collapse: collapse;"> <tr> <td>Target Race Time</td> <td>45 min</td> </tr> <tr> <td>Time Limit Race</td> <td>75 min</td> </tr> <tr> <td>Time Limit Mark 1</td> <td>30 min</td> </tr> <tr> <td>Finish Window</td> <td>20 min</td> </tr> </table> | Target Race Time | 45 min | Time Limit Race | 75 min | Time Limit Mark 1 | 30 min | Finish Window | 20 min |
| Target Race Time                        | 45 min   |                  |        |                 |        |                   |        |               |        |
| Time Limit Race                         | 75 min   |                  |        |                 |        |                   |        |               |        |
| Time Limit Mark 1                       | 30 min   |                  |        |                 |        |                   |        |               |        |
| Finish Window                           | 20 min   |                  |        |                 |        |                   |        |               |        |
| 15.2                                    | If no boat has passed Mark 1 within the Mark 1 Time Limit the race will be abandoned.  |                  |        |                 |        |                   |        |               |        |
| 15.3                                    | Boats failing to finish within the time stated in the Finish Window after the first boat sails the course and finishes will be scored Did Not Finish. This changes RRS 35, A4 and A5.  |                  |        |                 |        |                   |        |               |        |

| <b>16. EQUIPMENT AND MEASUREMENT CHECKS</b> |  |
|---|--|
| 16.1  | Each boat must present a valid measurement certificate at registration.  |
| 16.2  | Equipment may be inspected at any time for compliance with the Class Rules and Sailing Instruction. When instructed by an event equipment inspector, a boat shall proceed immediately to a designed area for inspection. |

| <b>17. [DP] REPLACEMENT OF CREW OR EQUIPMENT</b> |   |
|--|---|
| 17.1   | Substitution of competitors will not be allowed without prior written approval of the Race Committee and shall comply with any restrictions in the Notice of Race.                                      |
| 17.2   | Substitution of damaged or lost equipment will not be allowed unless approved by the Race Committee. Requests for substitution shall be made to the Race Committee at the first reasonable opportunity. |



## 18. OFFICIAL BOATS

|      |   |
|------|---|
| 18.1 | Jury boats are marked with a white flag with a red 'J'.<br>Safety boats are marked with a sign with the letters 'SAFE'<br>Race committee boats are marked with a sign with the letters 'RC' |
|------|---|

## 19. [DP] SUPPORT BOATS

|      |   |
|------|---|
| 19.1 | Support boats shall comply with NoR 13. |
|------|---|

## 20. [DP] [NP] [SP] IDENTIFICATION AND ADVERTISING WHILE RACING

|      |  |
|------|--|
| 20.1 | Each day, the first, second and third boat in series ranking at the beginning of the day shall display a yellow, blue and red bib on the crew respectively while racing. The bibs are provided at the race office and shall be returned latest at the end of the protest time on each day of racing. |
| 20.2 | For split fleet events, boats shall display a coloured band on ribbon corresponding to the fleet to which she has been assigned. The Organizing Authority will supply the bands or ribbons.  |
| 20.3 | Boats shall display bow numbers.<br>The organizing authority will supply the numbers, and instructions for their use.  |
| 20.4 | Boats shall display required event sponsor advertising if supplied by the organizing authority.<br>The organizing authority will supply the instructions for their use.  |

## 21. SCORING

|       |  |
|-------|--|
| 21.1  | Three (3) races are required to be completed to constitute a championship.   |
| 21.2  | The scoring system will include both qualification and final series results, but not the practice race.  |
| 21.3  | Competitors will be seeded into groups to sail the qualification series.   |
| 21.4  | A minimum of six (6) races are required to be completed to constitute the qualification series.  |
| 21.5  | When fewer than six (6) qualification races have been completed, a boat's qualification series score will be the total of her race scores  |
| 21.6  | When six (6) or more qualification races have been completed, a boat's qualification series score will be the total of her race scores excluding her worst score.  |
| 21.7  | After the qualification series is completed, competitors will be divided into Gold fleet and Silver fleet. In case of odd entry numbers, Gold fleet will gather one more competitor than Silver fleet.   |
| 21.8  | When fewer than six (6) final races have been completed, a boat's final score will be the total of her final race scores, added to her qualification series score.                                       |
| 21.9  | When six (6) or more final races have been completed, a boat's final score will be the total of her final races scores excluding her worst final race score, added to her qualification series score.    |
| 21.10 | To establish the final results, Gold fleet competitors will be scored higher than Silver fleet competitors. In case of no final races, the final result will be based on the qualification results only. |

## 22. PROTESTS, PENALTIES AND REQUESTS FOR REDRESS

|      |  |
|------|--|
| 22.1 | Protest forms are available at the Race Office. Protests and requests for redress or reopening shall be delivered there within the appropriate time limit.   |
| 22.2 | The protest time limit is 60 minutes after the last boat has finished the last race of the day, or the Race Committee signals no more racing today, whichever is later.  |
| 22.3 | Notices will be posted within 30 minutes of the protest time limit, to inform competitors of hearings in which they are parties or named as witnesses. Hearings will be held in the protest room, located at opposite the Race Office beginning at the time posted.<br>Hearings may be scheduled to begin up to 30 minutes before the end of protest time.             |
| 22.4 | Notices of protests by the Race Committee or Protest Committee will be posted to inform boats under RRS 61.1(b).   |
| 22.5 | Breaches of NOR 14 (Berthing) and rules in the SIs marked [NP] will not be grounds for a protest by a boat. This changes RRS 60.1(a).  |
| 22.6 | For breaches of the SIs marked [SP], the Race Committee may apply a standard penalty without a hearing. A list of these breaches and the associated standard penalties will be posted on the Official Notice Board. However, the Race Committee may protest a boat when they consider the standard penalty to be inappropriate. This changes RRS 63.1 and Appendix A5. |



|      |   |
|------|---|
| 22.7 | On the last scheduled day of racing, a request for redress based on a protest committee decision shall be delivered no later than 30 minutes after the decision was posted.<br>This changes RRS 62.2. |
|------|---|

### 23. [DP] RADIO COMMUNICATION

|      |  |
|------|--|
| 23.1 | A boat shall neither make radio transmissions while racing nor receive radio communications not available to all boats, except in an emergency or when using equipment provided by the Race Committee. This restriction also applies to mobile telephones. |
|------|--|

### 24. [DP] TRASH DISPOSAL

|      |  |
|------|--|
| 24.1 | As sailors, we seek to protect and restore our oceans and coastal waters. See RRS 55. Trash may be placed aboard support and Race Committee Boats. |
|------|--|

### 25. PRIZES

|      |  |
|------|--|
| 25.1 | The regatta winners will obtain the title “2017Formula 18 World Champions” and will be awarded the International Formula 18 World Champions Perpetual Trophy.  |
| 25.2 | Prizes will be awarded in the following categories subject to entry numbers: <ul style="list-style-type: none"> <li>• Overall (both Gold and Silver fleets)</li> <li>• Female team – both helm and crew shall be female</li> <li>• Mixed team</li> <li>• Master – the helm and crew shall be aged 50 years or older (both team members born before 1.1.1967)</li> <li>• Youth – both helm and crew shall be under 23 years of age (both team members born on or after 1.1.1995)</li> </ul> |
| 25.3 | Other prizes may be awarded.   |
| 25.4 | Prizes will only be awarded to teams who attend the prize giving ceremony and are represented by themselves.   |

### 26. [DP] [NP] MEDIA AND GPS POSITIONING EQUIPMENT

|      |  |
|------|--|
| 26.1 | The Organising Authority may request competitors to carry on board and use two-way communication devices for media interviews. Using this device for media interviews does not violate SI 23.  |
| 26.2 | Competitors may also use their own camera recording equipment and attachments if not forbidden by class rules, but these are to be removable for weighing. A boat shall not be given redress based on a claim involving this equipment. This changes RRS 62.1. |
| 26.3 | A media TV boat may be positioned inside the race course. This is no reason for redress. This change RRS 62.1a.  |

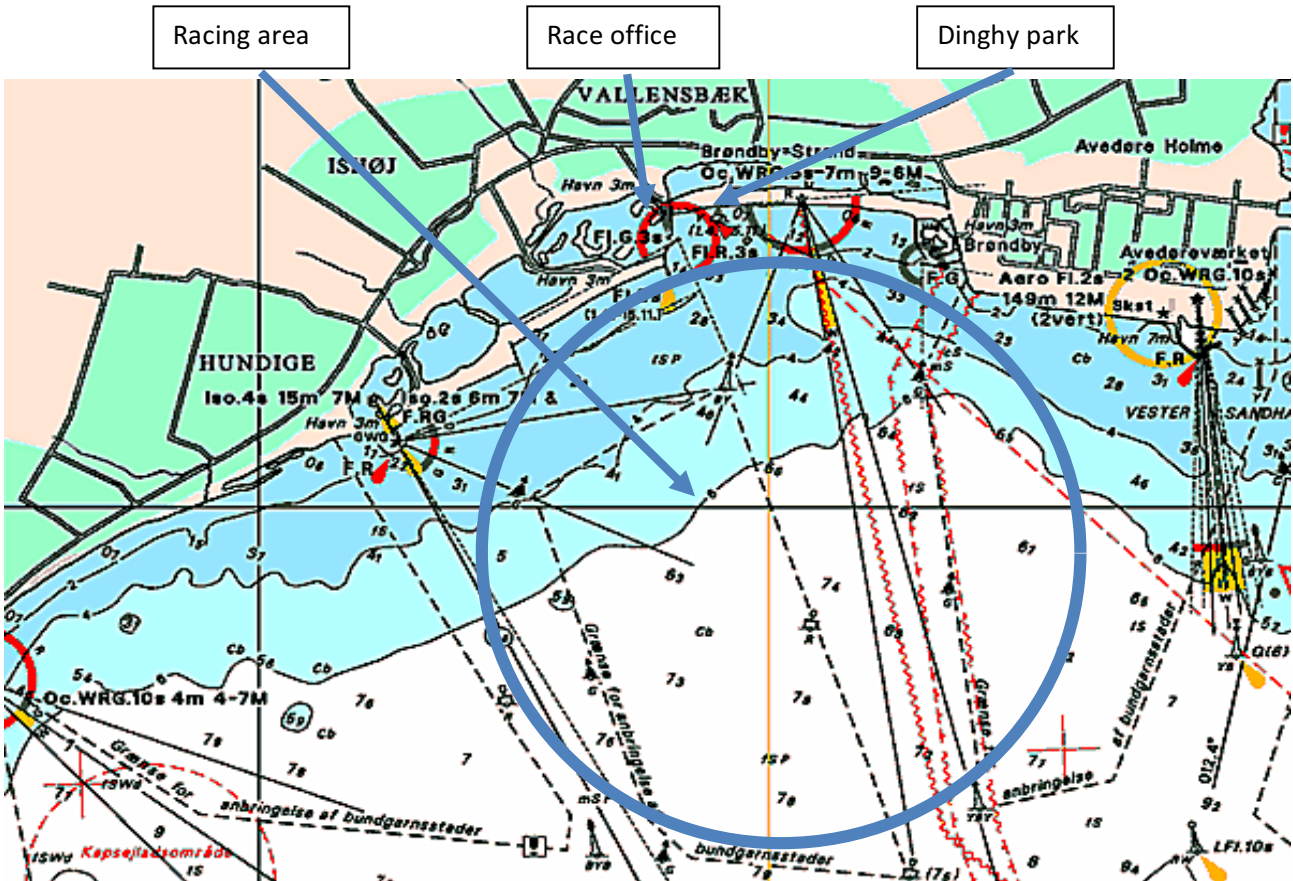
### 27. Disclaimer of Liability

|      |   |
|------|---|
| 27.1 | Competitors participate in the regatta entirely at their own risk. See RRS 4, Decision to Race. The Organizing Authority will not accept any liability for material damage or personal injury or death sustained in conjunction with or prior to, during, or after the regatta. |
|------|---|

### 28. INSURANCE

|      |   |
|------|---|
| 28.1 | Each participating boat shall be insured with valid third-party liability insurance with a minimum cover of €2.0 million per incident or the equivalent. A copy of the current insurance certificate shall be available to be shown prior to the start of the 1st race. |
|------|---|

## Addendum A – Course area





## Addendum B – Course description

Sailing the course:

No numeral pennant displayed: Start – 1 – 3 – 4s/4p – 3 – 4p – Finish

Numeral pennant "0" displayed: Start – 1 – 2 – 5s/5p – 1 – 3 – 4p - Finish

